

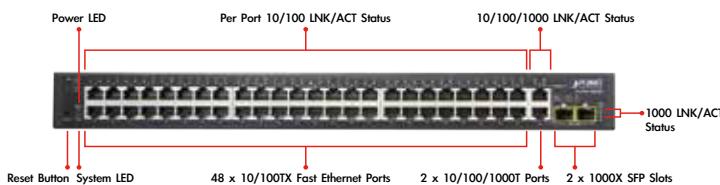
48-Port 10/100TX + 2-Port Gigabit + 2-Port 1000X SFP Managed Switch



A few years ago, PLANET developed the FGSW-4840S, the best solution for a cost-effective, high-density network application. To further enhance the solution with a more robust Layer 2 management function, PLANET has released a brand-new version of the FGSW-4840S. The brand-new FGSW-4840S is definitely more secure in that it allows the remote system to maintain or configure under security management interfaces.

High-Density, Full-Functioned, Layer 2 Managed Switch for Enterprise and Campus Networking

PLANET FGSW-4840S is a 48-Port 10/100Mbps Fast Ethernet Switch with 2-Port Gigabit and 2-Port Gigabit SFP interfaces, which comes with a high-performance switch architecture, capable of providing non-blocking 17.6Gbps switch fabric and wire-speed throughput at 13Mpps. Its four built-in GbE uplink ports also offer incredible extensibility, flexibility and connectivity to the core switch or servers. The powerful features of QoS and network security offered by the FGSW-4840S enable the switch to perform effective data traffic control for ISP and enterprise VoIP, video streaming and multicast applications. It is ideal for the remote access layer of campus or enterprise networks and the aggregation layer of IP metropolitan networks.



Robust Layer 2 Feature

The FGSW-4840S can be programmed for advanced switch management functions such as port mirror, port security, port isolation and loopback detection. It also features the dynamic port link aggregation (Static Trunk and LACP), 802.1Q VLAN, Spanning Tree protocol (STP), Rapid Spanning Tree protocol (RSTP) and Multiple Spanning Tree protocol (MSTP), Static / Dynamic / Filtering MAC address, IGMP Snooping, Multicast IP and Multicast Filter. With DHCP filtering, via aggregation of supporting ports, the FGSW-4840S allows the operation of a high-speed trunk to combine with multiple ports. It enables a maximum of up to 6 groups of 4 ports for trunk and supports fail-over as well.

Enhanced Security

The FGSW-4840S offers comprehensive Layer 2 to Layer 4 Access Control List (ACL) for enforcing security to the edge. It can be used to restrict network access by denying packets based on source and destination IP address.

Physical Port

- **48-port 10/100Base-TX** Fast Ethernet RJ45 copper, auto MDI / MDIX
- **2-port 10/100/1000Base-T** Gigabit Ethernet RJ45 copper, auto MDI / MDIX
- **2 1000Base-X** mini-GBIC/SFP slots
- Reset button for system factory default

Layer 2 Features

- Prevents packet loss with back pressure (half-duplex) and IEEE 802.3x pause frame flow control (full-duplex)
- High-performance Store and Forward architecture, and runt/CRC filtering eliminates erroneous packets to optimize the network bandwidth
- Supports VLAN
 - IEEE 802.1Q tagged VLAN, up to 512 VLAN groups, out of 4094 VLAN IDs
 - Management VLAN
- Supports Spanning Tree Protocol
 - STP (Spanning Tree Protocol)
 - RSTP (Rapid Spanning Tree Protocol)
 - MSTP (Multiple Spanning Tree Protocol)
 - Loop Guard, Root Guard, TC, BPDU Guard, STP BPDU Guard, BPDU Filtering
- Supports Link Aggregation
 - IEEE 802.3ad Link Aggregation Control Protocol (LACP)
 - Cisco ether-channel (Static Trunk)
 - Maximum 6 trunk groups, up to 4 ports per trunk group
- Provides port mirror (many-to-1)

Quality of Service

- Ingress / Egress Rate Limit per port bandwidth control
- Storm Control support
 - Broadcast / Unknown Unicast / Unknown Multicast
- Traffic classification
 - IEEE 802.1p CoS
 - DSCP / ToS priority
- Strict priority, Weighted Round Robin (WRR) and Equal CoS policies
- Voice VLAN

Efficient Traffic Control

The FGSW-4840S is loaded with robust QoS features and powerful traffic management to enhance services to business-class data, voice, and video solutions. The functionality includes broadcast / multicast / unicast storm control, per port bandwidth control, 802.1p / CoS / IP DSCP QoS priority and remarking. It guarantees the best performance at VoIP and video stream transmission, and empowers the enterprises to take full advantages of the limited network resources.

Enhanced and Secure Management

For efficient management, the FGSW-4840S is equipped with Web, Telnet and SNMP management interfaces. With the built-in Web-based management interface, the FGSW-4840S offers an easy-to-use, platform-independent management and configuration facility. By supporting the standard Simple Network Management Protocol (SNMP), the switch can be managed via any standard management software. For text-based management, the switch can be accessed via Telnet. Moreover, the FGSW-4840S offers secure remote management by supporting HTTPS and SNMPv3 connections which encrypt the packet content at each session.

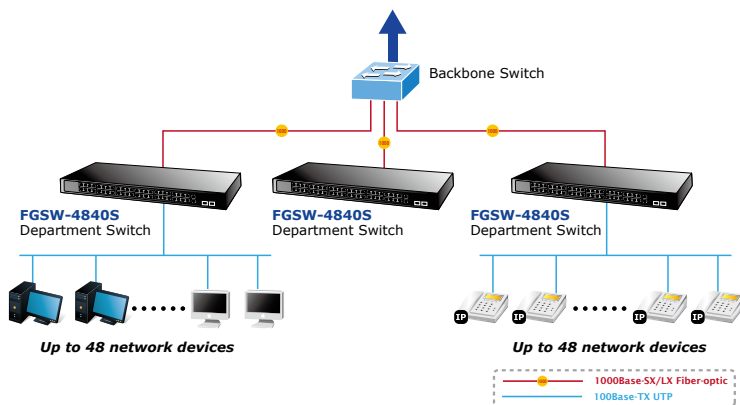
Flexible Extension Solution

The two mini-GBIC slots built in the FGSW-4840S are compatible with the 1000Base-SX/LX SFP (Small Form-factor Pluggable) fiber transceiver to uplink to the backbone switch and monitoring center in long distance. The distance can be extended from 550 meters (multi-mode fiber) to 10/20/30/40/50/70/120 kilometers (single-mode fiber or WDM fiber). They are well suited for applications within the enterprise data centers and distributions.

Applications

Extension Department / Workgroup Switch

With 48 10/100Mbps ports and 2 10/100/1000Base-T ports, the FGSW-4840S connects up to 50 workstations in Ethernet environment. The two SFP Mini-GBIC interfaces can be uplinked to a department backbone; moreover, the FGSW-4840S provides a 17.6 Gigabit per second switch fabric and is able to provide high bandwidth for backbone connection.



Multicast

- IGMP Snooping v1, v2 and v3
- Multicast IP Table / Static Multicast IP
- Multicast Filter

Security

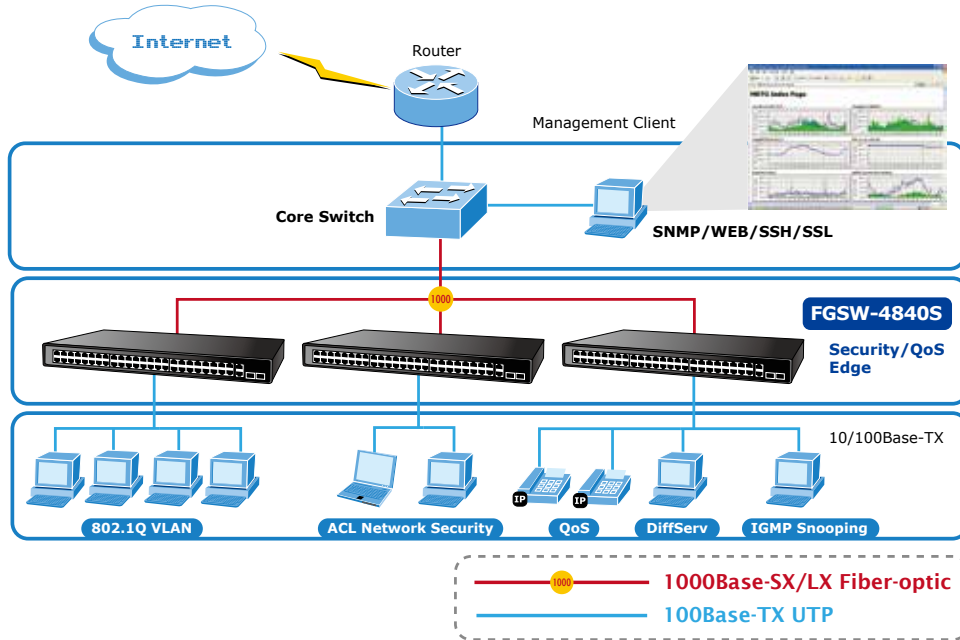
- L2 / L3 / L4 Access Control List
- MAC Security
 - Static MAC
 - MAC Filtering
- Port Security for Source MAC address entries filtering
- Port Isolation, loopback detection
- DHCP Filtering

Management

- Switch Management Interface
 - Web switch management
 - Telnet Command Line Interface
 - SNMP v1, v2c and v3
 - SSL v2, v3 / SSH v1,v2 secure access
 - IP / MAC / Port-based Web access control
- Static, DHCP and BootP for IP address assignment
- System Maintenance
 - Firmware upload / download via HTTP
 - Configuration upload / download through HTTP
 - Hardware reset button for system reset to factory default
 - System CPU / Memory status monitor
- System Time Setting
 - Manual Setting
 - Network Time Protocol
 - PC clock synchronization
- Daylight Saving Time Setting
- SNMP trap for interface Link Up and Link Down notification
- System Local Log / remote log / backup log
- Four RMON groups (history, statistics, alarms and events)
- Virtual Cable Test / Loop Back Test

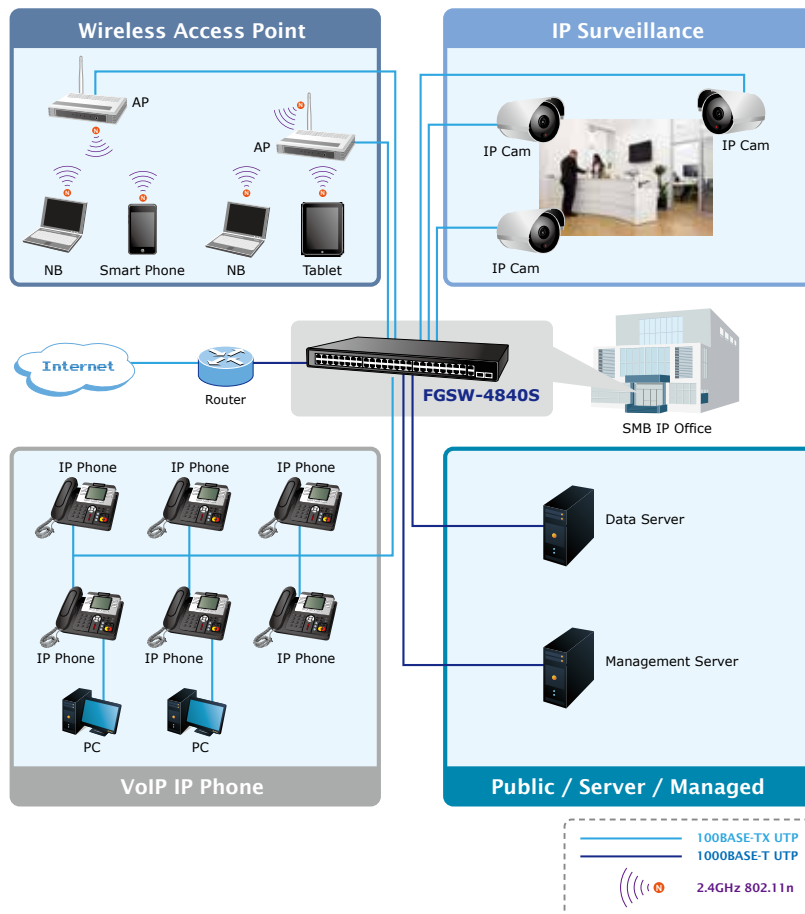
Enterprise Security and QoS Edge Switch

Its MAC/IP/Protocol Access Control list and Port Security limit the number of MAC addresses to be passed through one specific port. IGMP snooping and QoS functions further improve the efficiency of the network and protect the network clients.



MTU Switch

In an MTU/MDU application, the advanced functionality of the FGSW-4840S eliminates the traditional issues associated with the use of Ethernet. Users can be segregated by advanced VLAN functionality to enhance security and bandwidth managed with tiered bandwidth provision and control through configurable upstream/downstream restrictions. These coupled with the flexible Mini-GBIC 1000Base-SX/LX module options make the FGSW-4840S to be one of the best and most cost-effective switch solutions for multi-tenant service providers.



Specifications

| | |
|---------------------------------|--|
| Product | FGSW-4840S |
| Hardware Specifications | |
| Hardware Version | 3 |
| Copper Ports | 48 x 10/100Base-TX RJ45 auto-MDI/MDI-X port |
| Copper Ports | 2 x 10/100/1000Base-TX RJ45 auto-MDI/MDI-X port |
| SFP/mini-GBIC Slots | 2 1000Base-X SFP interfaces |
| Switch Architecture | Store-and-Forward |
| Switch Fabric | 17.6Gbps / non-blocking |
| Switch Throughput@64 bytes | 13Mpps @64 bytes |
| MAC Address Table | 8K entries |
| Flow Control | IEEE 802.3x pause frame for full-duplex Back pressure for half-duplex |
| Maximum Transmit Unit | 9216bytes |
| Reset Button | > 5 sec: Factory default |
| LED | System: Power (Green) SYS (Green) 10/100TX RJ45 Interfaces (Port 1 to Port 48): 100 LNK / ACT (Green), 10 LNK/ACT (Orange) 10/100/1000T RJ45 Interfaces (Port 49 to Port 50): 1000 LNK / ACT (Green), 10/100 LNK/ACT (Orange) 1000Mbps SFP Interfaces (Port 51 to Port 52): 1000 LNK / ACT (Green) |
| Power Requirements | 100~240V AC, 50/60Hz, 0.4A |
| Power Consumption / Dissipation | Max.17.3 watts / 59BTU |
| Dimensions (W x D x H) | 440 x 180 x 44 mm (1U height) |
| Weight | 2.5kg |
| Enclosure | Metal |
| Layer 2 Functions | |
| Port Mirroring | TX / RX Many-to-1 monitor |
| Port Security | Up to 64 MAC Address per port |
| Port Isolation | Support |
| Loopback Detection | Support |
| Link Aggregation | IEEE 802.3ad LACP and static trunk supports 6 groups of 4-port trunk. |
| VLAN | 802.1Q tagged-based VLAN, up to 512 VLAN groups, out of 4094 VLAN IDs Management VLAN |
| Spanning Tree Protocol | STP / RSTP / MSTP |
| Multicast | IGMP (v1/v2/v3) Snooping Multicast IP Multicast Filter |
| Access Control List | L2 / L3 / L4 Access Control List |
| QoS | 4 Priority Queues Traffic classification: - IEEE 802.1p CoS - DSCP / ToS priority Strict priority, Weighted Round Robin (WRR) and Equal CoS policies Ingress / Egress Rate Limit per port bandwidth control Storm Control support: - Broadcast / Unknown Unicast / Unknown Multicast Voice VLAN |
| Security | MAC Security: - Static MAC - Dynamic MAC address - MAC Filtering Loop Guard, Root Guard, TC, BPDU Guard, STP BPDU Guard, BPDU Filtering, DHCP Filtering |
| Virtual Cable Test | Support |
| Loopback Test | Support |

| Management Functions | |
|------------------------------|--|
| Basic Management Interfaces | Web browser / Telnet / SNMP v1, v2c, v3 / SSL v2, v3 / SSH v1,v2 Firmware upgrade by HTTP protocol through Ethernet network Configuration Backup / Restore by HTTP protocol through Ethernet network |
| Secure Management Interfaces | HTTPs, SNMP v3 |
| Web Access Control | IP / MAC / Port-based Web access control |
| System IP Address Assignment | Static, DHCP and BOOTP |
| System Log | System local log / remote log / backup log |
| System Time Setting | Manual Setting, Network Time Protocol, PC clock synchronization |
| Daylight Saving Time | Support |
| SNMP RMON | RFC 2819 RMON (1, 2, 3, 9) |
| SNMP Trap | Interface Link Up and Link Down notification |
| Standards Conformance | |
| Regulation Compliance | FCC Part 15 Class A, CE |
| Standards Compliance | IEEE 802.3 10Base-T IEEE 802.3u 100Base-TX IEEE 802.3z Gigabit SX/LX IEEE 802.3ab Gigabit 1000Base-T IEEE 802.3x Flow Control and Back pressure IEEE 802.3ad Port Trunk with LACP IEEE 802.1D Spanning Tree protocol IEEE 802.1w Rapid Spanning Tree protocol IEEE 802.1s Multiple Spanning Tree protocol IEEE 802.1p Class of Service IEEE 802.1Q VLAN Tagging RFC 768 UDP RFC 791 IP RFC 792 ICMP RFC 2068 HTTP RFC 1112 IGMP version 1 RFC 2236 IGMP version 2 RFC 3376 IGMP version 3 |
| Environment | |
| Operating | Temperature: 0 ~ 50 degrees C Relative Humidity: 5 ~ 95% (non-condensing) |
| Storage | Temperature: -10 ~ 70 degrees C Relative Humidity: 5 ~ 95% (non-condensing) |

Ordering Information

| | |
|------------|---|
| FGSW-4840S | 48-Port 10/100TX + 2-Port Gigabit + 2-Port 1000X SFP Managed Switch |
|------------|---|

Available Gigabit SFP Modules for FGSW-4840S

| | |
|----------|--|
| MGB-GT | SFP-Port 1000Base-T Module |
| MGB-SX | SFP-Port 1000Base-SX mini-GBIC module - 220/550m |
| MGB-LX | SFP-Port 1000Base-LX mini-GBIC module - 10km |
| MGB-L30 | SFP-Port 1000Base-LX mini-GBIC module - 30km |
| MGB-L50 | SFP-Port 1000Base-LX mini-GBIC module - 50km |
| MGB-L70 | SFP-Port 1000Base-LX mini-GBIC module - 70km |
| MGB-L120 | SFP-Port 1000Base-LX mini-GBIC module - 120km |
| MGB-LA10 | SFP-Port 1000Base-LX (WDM,TX:1310nm) mini-GBIC module - 10km |
| MGB-LB10 | SFP-Port 1000Base-LX (WDM,TX:1550nm) mini-GBIC module - 10km |
| MGB-LA20 | SFP-Port 1000Base-LX (WDM,TX:1310nm) mini-GBIC module - 20km |
| MGB-LB20 | SFP-Port 1000Base-LX (WDM,TX:1550nm) mini-GBIC module - 20km |
| MGB-LA40 | SFP-Port 1000Base-LX (WDM,TX:1310nm) mini-GBIC module - 40km |
| MGB-LB40 | SFP-Port 1000Base-LX (WDM,TX:1550nm) mini-GBIC module - 40km |

PLANET Technology Corporation

11F., No.96, Minquan Rd., Xindian Dist., New Taipei City
231, Taiwan (R.O.C.)

Tel: 886-2-2219-9518

Email: sales@planet.com.tw

Fax: 886-2-2219-9528

www.planet.com.tw



PLANET reserves the right to change specifications without prior notice. All brand names and trademarks are property of their respective owners. Copyright © 2014 PLANET Technology Corp. All rights reserved.

FGSW-4840Sv3