

# ENVELOPE / ASSEMBLY DRAWING

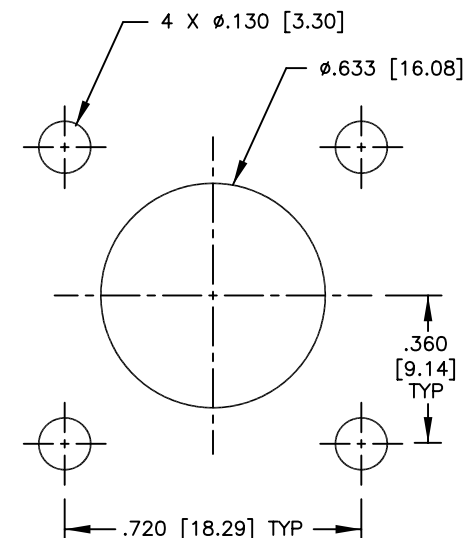
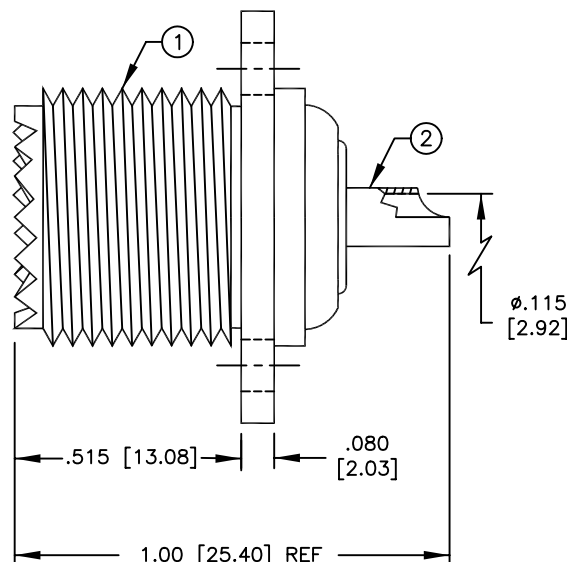
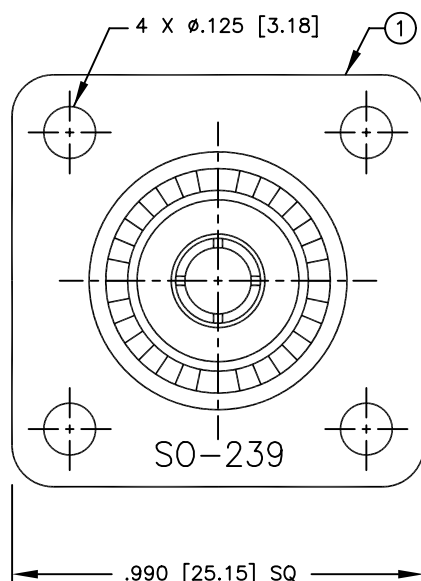
000494

## SPECIFICATION CONTROL DRAWING

THIS DRAWING CONTAINS INFORMATION PROPRIETARY TO RF INDUSTRIES, LTD. ANY UNAUTHORIZED USE OF THIS DRAWING IS EXPRESSLY PROHIBITED. ANY VIOLATION IS PUNISHABLE UNDER U.S. COPYRIGHT LAWS.

REV	DESCRIPTION	DWN	DATE	APPROVED
A	ENGINEERING RELEASE	CZS	4/1/98	R. RICE

ALL DIMENSIONS ARE REFERENCE ONLY



SUGGESTED MOUNTING CONFIGURATION

### SPECIFICATIONS:

IMPEDANCE: NON CONSTANT  
WORKING VOLTAGE: 500 VRMS @ SEA LEVEL  
FREQUENCY RANGE: 0-300 MHz

DIMENSIONS ARE IN INCHES  
AND [MILLIMETERS]

UNLESS OTHERWISE NOTED  
TOLERANCES ARE:

DECIMALS DIAMETER

DRAWN  
C. ZUNIGA 4/1/98

CHECKED

ORJ DRAWN  
C. ZUNIGA 4/1/98

APPROVALS DATE

**RFconnectors**  
DIVISION OF RF INDUSTRIES, LTD.

7610 MIRAMAR RD  
SAN DIEGO, CA 92126  
(619) 549-6340  
(619) 549-6345 FAX

## RFU-521 / SO-239

UHF FEMALE 4 HOLE FLANGE WITH SOLDER CUP

SIZE	CABLE GROUP	DWG NO.	REV
A	N/A	8895	A

SCALE: 2:1

CAD FILE 13ARC B

SHEET 1 OF 1

ITEM	DESCRIPTION	QTY	MATERIAL	FINISH
4	PRESS FIT WASHER	1	BRASS	NICKEL
3	DIELECTRIC	1	DAP	PANTONE 129
2	CONTACT	1	BRASS	SILVER
1	BODY	1	DIECAST ZINC	NICKEL