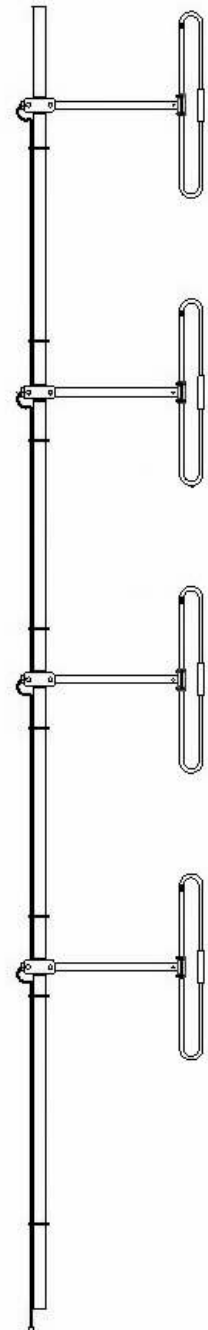


SD214-SF2PASNM(D00) 4 dipole, 8/8.5 dBd, field adjustable, 138-174 MHz

- Field adjustable to allow for either Bi-directional or Offset pattern
- 8.0 dBd in bi-directional configuration, 8.5 dBd gain in offset configuration
- 300 watt power handling
- Can be top or side mounted (universal mount)

**Recommend SMK-125-A3 or SMK-125-A7 for Offset Side Mount.
 Available from Sinclair separately.**

The SD214 series is a rugged 4-bay exposed dipole antenna designed for applications where moderate gain is required. These premium-quality antennas are well suited to public safety applications.



Region	United States	Europe, Middle East and Africa	Caribbean and Latin America	Canada and rest of the world
Telephone	USA: 1 800 263 3275	International: +44 (0) 1487 84 28 19	International: +1 905 726 7676	Canada: 1 800 263 3275 International: +1 905 727 0165
E-mail	salesusa@sinctech.com	salesuk@sinctech.com	salesla@sinctech.com	salescan@sinctech.com
Product Specification Sheet EPR 015710 Customer Tech Manual 005237		SD214-SF2PASNM(D00)	Issue: 2	Dated: 14-12-16 Dated: 29-11-16

Electrical Specifications

Frequency Range	MHz	138 to 174	
Connector		N-Male	
Gain (nominal)	dBd (dBi)	8.5 (10.6)	*1
Input VSWR (max)		1.5:1	
Polarization		vertical	
Impedance	Ω	50	
Pattern		Offset or Bi-directional	
Horizontal beamwidth (typ)	degrees	210	*2
Vertical beamwidth (typ)	degrees	17	
Average Power Input (max)	W	300	
Lightning protection		DC ground	

Notes

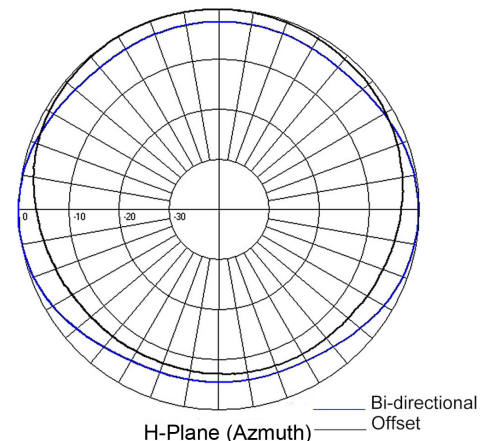
- *1 : 8.0 dBd in bi-directional configuration
- *2 : For offset configuration
- *3 : Qty 2
- *4 : 3 packages in total: 2nd is 6x40x22 in, and a 1 pc pipe 240 in

Mechanical Specifications

Width	in (mm)	46.4 (1179)	
Depth	in (mm)	4 (102)	
Length/ Height	in (mm)	240 (6096)	
Base pipe diameter	in (mm)	2.38 (60)	
Radiating element material		aluminum	
Base pipe material		aluminum	
Weight	lbs (kg)	58 (26.33)	
Mounting Hardware (Optional)		Clamp005, Clamp015, or Clamp130	*3
Actual shipping weight	lbs (kg)	80 (36.32)	
Shipping dimensions	in (mm)	156x6x6 (3962x152x152)	*4
Mounting configurations		Universal Mount	
Recommended For Offset Side Mount:		SMK-125-A3 or SMK-125-A7	

Ordering Information

Clamps must be ordered separately.



Environmental Specifications

Temperature range	°F (°C)	-40 to +140 (-40 to +60)
Wind Loading Area (Flat Plate Equivalent)	ft ² (m ²)	3.84 (0.36)
Wind Loading Area (1/2" ice)	ft ² (m ²)	6.54 (0.61)
Rated wind velocity (no ice)	mph (km/h)	125 (201)
Rated wind velocity (1/2" radial ice)	mph (km/h)	90 (145)
Lateral thrust (100 mph No Ice)	lbs (N)	140 (622.7)
Torsional moment (100 mph No Ice)	ft-lbs (Nm)	180 (243)
Bending moment (100 mph No Ice)	ft-lbs (Nm)	776 (1047.6)
Tip deflection (100 mph No Ice)	degrees	2.2

Region	United States	Europe, Middle East and Africa	Caribbean and Latin America	Canada and rest of the world
Telephone	USA: 1 800 263 3275	International: +44 (0) 1487 84 28 19	International: +1 905 726 7676	Canada: 1 800 263 3275 International: +1 905 727 0165
E-mail	salesusa@sinctech.com	salesuk@sinctech.com	salesla@sinctech.com	salescan@sinctech.com