

HHM Series Mounts and Adapters

www.honeywellvideo.com

MOUNTS AND ADAPTERS FOR HHC SERIES HOUSINGS

Honeywell's new HHM Series mounts and adapters provide a wide range of mounting options for HHCWM and HHCWM2 weatherproof housings. Their simple design and durable construction makes them an installer's first choice for hassle-free installation and maintenance.

The **HHMW** wall mount is constructed of sturdy but lightweight high tensile cast aluminum and can support loads of up to 33 lb (15 kg). The simple, attractive design conceals cabling and offers a full range of motion (360° pan and 90° tilt) when positioning the housing. The HHMW wall mount can be mounted to any vertical load-bearing surface and is suitable for both indoor and outdoor applications.

The **HHMPMA2** pole mount adapter allows the HHMW wall mount to be installed to poles 3 to 6 inches (80 to 160 mm) in diameter, providing maximum viewing coverage even under high wind conditions. It is constructed of heavy-duty steel and is rated to withstand temperatures from -58°F to 122°F (-50°C to 50°C).

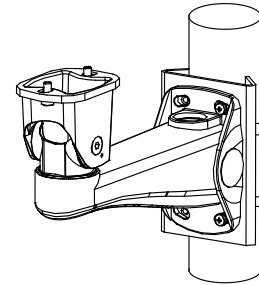
The **HHMCJ** ceiling mount is constructed of high tensile cast aluminum and can support loads of up to 22 lb (10 kg). It provides cable management, 90° pan and 180° tilt, and can be installed directly to any horizontal load-bearing surface. The HHMCJ ceiling mount is suitable for both indoor and outdoor applications.

Market Opportunities

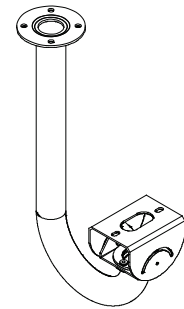
Honeywell's HHC Series weatherproof housings are designed for applications where ease of installation is a primary concern. The attractive design, rugged construction, and range of mounting options make these housings suitable for a wide variety of indoor and outdoor applications, including parking lots, lobbies, building entranceways, atriums, driveways, loading docks, and foyers.

Features

- Heavy-duty construction for harsh environments
- No exposed wiring; cabling is hidden inside mount
- Multiple viewing angles
- Easy to install
- Attractive, contemporary design
- Powder coating for corrosion resistance and protection against UV rays



HHMW HHMPMA2



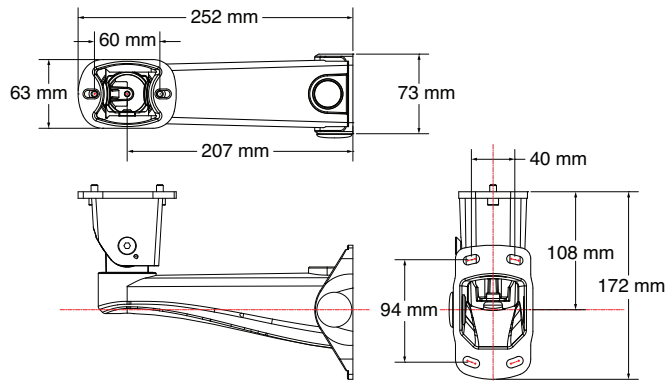
HHMCJ

HHM Series Mounts and Adapters

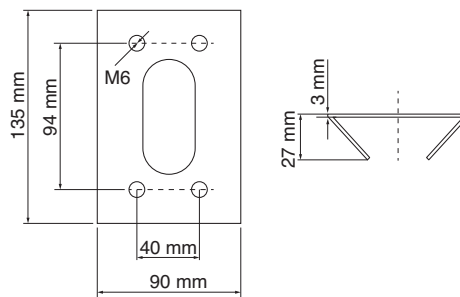
www.honeywellvideo.com

SPECIFICATIONS

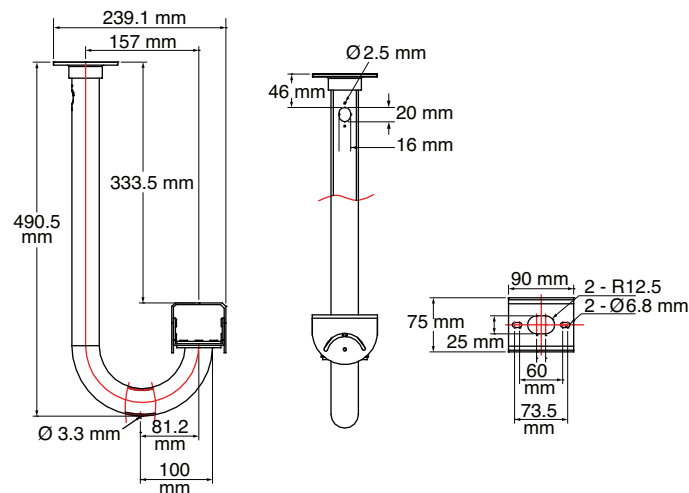
HHMW	
Construction	Cast Aluminum
Finish	Cool Gray
Dimensions	See line drawing
Weight	2.64 lb (1.2 kg)
Max. Load	33 lb (15 kg)
Head	360° pan, 90° tilt



HHMPMA2	
Construction	Steel
Finish	Cool Gray
Dimensions	See line drawing
Weight	0.95 lb (0.43 kg)
Pole Diameter	3 to 6 in. (80 to 160 mm)
Temperature	-58°F to 122°F (-50°C to 50°C)



HHMCJ	
Construction	Cast aluminum
Finish	Cool Gray
Dimensions	See line drawing
Weight	1.54 lb (0.7 kg)
Max. Load	22 lb (10 kg)
Head	90° pan, 180° tilt



Ordering	
HHMW	Wall mount (for HHCWM and HHCWM2 housings)
HHMPMA2	Pole mount adapter (for HHMW wall mount)
HHMCJ	Ceiling "J" mount

NOTE: Honeywell reserves the right, without notification, to make changes in product design or specifications.

Automation and Control Solutions

Honeywell Systems
2700 Blankenbaker Pkwy, Suite 150
Louisville, KY 40299
1.800.796.2288
www.honeywell.com

L/HMSMAD/D
June 2012
© 2012 Honeywell International Inc.

Honeywell